



Rebecca and Freddie love spending time together in their new kitchen.



Assisting the couple's varied cooking requirements, the powerful Neff hob is set into durable Nero Assoluto granite.



A wooden peg system ensures minimum movement and organisation of tableware.



The treasured antique French armoire was a present from Rebecca's mother.

kitchen profile

This sleek, gloss laminate Cambia kitchen from Rational has been created by Vivienne Warman of Kitchen Co-ordination with both glamorous looks and everyday practicality in mind. Tones of Cappuccino and Cammee are beautifully combined with polished black granite worktops and accents of stainless steel, while a vibrant fuchsia-pink glass splashback adds instant pizzazz. Boasting meticulous attention to detail, its streamlined style has been tailor-made to create a modern environment for a young family of four.

Kitchen Co-ordination Ltd., 81 Panshurst Gardens, Edgware, Middlesex HA8 9TT. Tel: 020 8958 6262. www.kitchencoordination.co.uk. Kitchens cost from £8000.

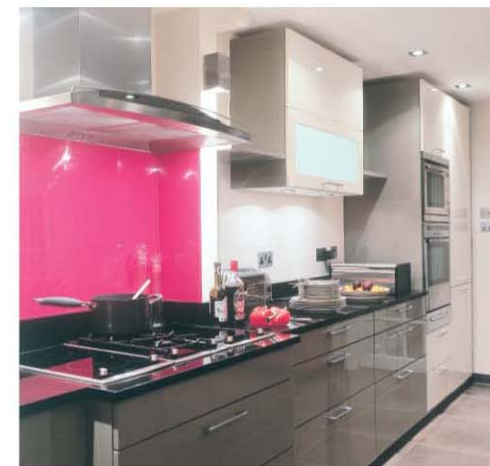
Feature by *Amelia Thorpe* Photography by *Robert Reader*

café crème

Delicious hues meet fine design and French furniture in this south London Victorian terrace, showcasing comfortable, yet chic, living at its best.



“Now, our guests gather round the island and we share a bottle of wine whilst I'm cooking the dinner.”



above Instantly catching the eye, the vibrant fuchsia-pink splashback not only looks amazing but is practical, too.

left Able to accommodate ten people comfortably, an American walnut dining table and chocolate leather chairs are perfect for family visits.

At the eleventh hour, Rebecca and Patrick Robb changed their minds. They had been planning a traditional kitchen makeover, when, suddenly, they decided they would prefer something completely different. Explains Rebecca, “Our last kitchen was practical but ordinary, and it was easy to choose the same again. Then, one night, Patrick and I were chatting and agreed that, since we're planning to live in this house for ages and are not worried about picking something to suit all tastes with re-sale in mind, why not choose a more exciting design?”

Rebecca called on Vivienne Warman of Kitchen Co-ordination to come up with a dream style. Vivienne, who loves working with interesting colour combinations, responded to the challenge, creating a two-toned bank of units and a separate island, all topped with polished black granite. “I try to make each kitchen individual and special,” she says, who, along with Rebecca, agreed that an accent shade would complete the scheme. They toyed with duck-egg blue, but Rebecca, as mum to two boys, Charlie (six) and Freddie (three), decided to go for something bold: “I love pink and, in a house filled with Power

Flangers, cars and gadgets, I wanted to make my statement. So, we opted for a fuchsia-pink glass splashback, added a big comfy sofa in a striped pink fabric, and my friend, Sarah, made a beautiful spray of silk parrot tulips,” she explains.

As Freddie runs at full tilt to jump into her arms, it's clear that Vivienne has become a friend of the family. Says Rebecca, “It definitely helped that we all got on so well. This house is a typical south London Victorian terrace and we built a glass walled extension across the rear of the house to create a much larger kitchen. Considering she was only working from plans on paper before the room was anywhere near complete, it was amazing to see how Vivienne helped me work out where to position my huge antique armoire, which was a present from my mother, plus the dining and living spaces.”

The island unit houses an integrated dishwasher, perfectly positioned for Rebecca who is left handed, plus spacious cupboards and a deep drawer containing a set of waste separation bins. “It all works so well for the way we live, and as a family we love sitting at the perfectly-sized island for our meals,” she says.



Rebecca chose domino hobs, which include gas and induction rings, plus a griddle. “We are a family of carnivores,” she laughs, “and we love barbecued meat. I throw on a few herbs and it's ideal for quick cooking steak and chops.” Rebecca's mother is French, and her continental ‘foodie’ tradition is evident in her love of cooking: “We often have friends for dinner, but I don't do anything complicated, because all that set piece dinner party scene just isn't our thing. Now, our guests gather round the island and we share a bottle of wine whilst I'm cooking the dinner. And Patrick makes a brilliant chocolate mousse,” she smiles.

It's clear that this is part of their house project that the couple enjoyed. Explains Rebecca, “This was so easy in comparison to the nightmare time we had when doing the loft conversion. It didn't even bother me that the kitchen painting was only just finished in time for our whole family to descend on us from France. We're so happy with the finished result.”

“Since we're planning to live in this house for ages, we agreed to choose a more exciting design. It all works so well for the way we live.”

left Stylish stools and glass pendant lights complete the relaxed breakfast bar area, mirrored at the other end of the island.

top right Specially made by a close friend, a beautiful spray of silk parrot tulips embraces the theme of pink accent pieces.

top far right Blanco's protruding Curzon tap features a pull-out spray for effortless washing of food and dishes.

right Entertaining is made easy with a top-of-the-range stainless steel oven, warming drawer and microwave, all from Neff.



Useful Information

Appliances
B1881 oven, £690; H7871 combi oven microwave, £670; N7140 warming drawer, £248; domino hobs: N1662 griddle, £470; N2262 two-ring gas, £350; N4263 two-ring ceramic induction, £400; D9970 extractor hood, £560, all at Neff. Tel: 0870 513 3090. www.neff.co.uk

SHV M03 fully-integrated dishwasher, £462, at Bosch. Tel: 0870 727 0446. www.boschappliances.co.uk

Similar PGG23 fridge freezer, around £1699, at GE Appliances. Tel: 0800 731 8657. www.geappl.co.uk

Fixtures and furnishings
Savanna glazed porcelain floor tiles from the Stonehenge collection, around £18 per 60cm by 60cm by 1cm tile, at Reed Harris. Tel: 020 7736 7511. www.reedharris.co.uk

ARX 160 under-mounted sink, £220, at Franke. Tel: 0161 436 6280. www.franke.co.uk

Curzon tap, £248, at Blanco. Tel: 020 8452 3399. www.blanco.co.uk

ISE 55 waste disposal unit, £140, at In-Sink-Erator. Tel: 0800 389 3715. www.insinkerator.com

Nero Assoluto granite worktop, £275 per linear m., at Rossi Stoneworks. Tel: 020 7609 7212. www.rossistoneworks.co.uk

Fuchsia-pink glass splashback, from around £300 per sq. m., at Glass Express. Tel: 020 7828 6046. www.glassexpress.co.uk

Conduit table, £1395, at Heals. Tel: 020 7636 1666. www.heals.co.uk

Calligaris Nuvola dining chairs in chocolate leather, £180 each, at Contempo. Tel: 020 8542 6400. www.calligaris.co.it

Similar bar stools, from around £40 each, at Dwell. Tel: 020 8767 4811. www.dwell.co.uk

Glass pendant lights, by Adrian Sankey, £82 each, at Kate Ward Interiors. Tel: 020 8767 2748.

Silk flower arrangements, prices from £8, at Sarah Foreman Designs. Tel: 020 8870 9386.